

# CCS Technical Documentation

## RH-41 Series Transceivers

# Service Software Instructions



**Contents**

	Page No
<b>Phoenix User's Guide</b> .....	5
Introduction .....	5
General Setup Procedure .....	5
Hardware Requirements for using Phoenix .....	6
Installing Phoenix .....	6
Installation Directions .....	6
Software Support Bundles:.....	6
Starting a Phoenix Session .....	7
Concepts.....	7
Initial Session with Phoenix .....	7
Scanning for a Product .....	9
Using Components .....	9
Using Profiles .....	9
Uninstalling Phoenix .....	10
Uninstalling Phoenix version: .....	10



## Phoenix User's Guide



### Introduction

This section briefly describes how to install Phoenix and includes some basic information on how to use the program. More detailed information can be found in the Phoenix Help files. Each feature in Phoenix has its own Help file, which can be activated while running Phoenix. To activate a Help file while Phoenix is running, press the **F1** key or the specific feature's **Help** button.

### General Setup Procedure

Initial installation of Phoenix requires the complete Phoenix installation package. This package, currently around 30 Megabytes in size, is provided on a CD-ROM disk. Because of this large size, it is not recommended to download the file nor is it practical to provide it on 3.5-inch floppy disks.

Install Phoenix by following the steps outlined on the material that comes with the disk. It should be noted that installation of a Nokia dongle on the computer being loaded is **REQUIRED** prior to beginning the installation of the software.

The software is packaged into an *Installshield* executable bundle. When the user double-clicks on this file, the installation program provides on-screen instructions on how to proceed. Standard installation, provided by selecting all default choices, is highly recommended. You may do a custom installation and place Phoenix into a special location on your hard drive, but this is only recommended for experienced users.

It is necessary to reboot the computer after installing the software. The program will not be usable until a reboot is performed. After reboot, the Phoenix icon is displayed on the computer desktop. Double-clicking on this icon launches the program.



## Hardware Requirements for using Phoenix

Minimum Hardware Requirements	
Processor	233 MHz
RAM	64 MB
Disk Space Needed	50-100 MB

Supported Operating Systems	Notes
Windows 95	Limited, no USB support
Windows 98	
Windows NT 4.0	no USB support
Windows 2000	Professional version

## Installing Phoenix

Before installing the software, verify:

- The dongle is attached to the parallel port for PKD version dongles, or an FLS-4 version dongle is attached on either the parallel port or the USB port (if the computer supports USB).
- Ensure that if the computer supports administrator rights (typically on Windows NT and Windows 2000 installations) that access is enabled for the user performing the Phoenix installation.
- If a previous version of Phoenix has been installed, it may be necessary to first properly remove that program prior to installing the new version. If installation is performed, be sure to reboot the computer prior to continuing. See the section **Uninstalling Phoenix** for instructions on how to uninstall.

## Installation Directions

- Insert the CD-ROM disk into the computer drive.
- Access the drive and double-click on the Phoenix software package found on the CD.
- Follow the on-screen prompts to conclusion.

*Note that rebooting the computer may be necessary when completed.*

## Software Support Bundles:

The Phoenix installation is auto-executable. You must obtain Software Support Bundles to load software upgrade files to customer-specific phone models.

These bundles are created by PAMS and made available by AMS on the Partners Web Page <http://americas.partners.nokia.com>. This web page is password-controlled; if you have not registered as a user, contact Nokia Central Service in Melbourne, Florida.

Similar to the Phoenix installation, these Software Support Bundles are *InstallShield* executable packages. Just double-click on the package and it will auto-install.

No rebooting of the computer is required.

## Starting a Phoenix Session

### Concepts

When referring to Phoenix, *Product* is the cellular phone attached to the computer. More specifically, it is the particular type of phone.

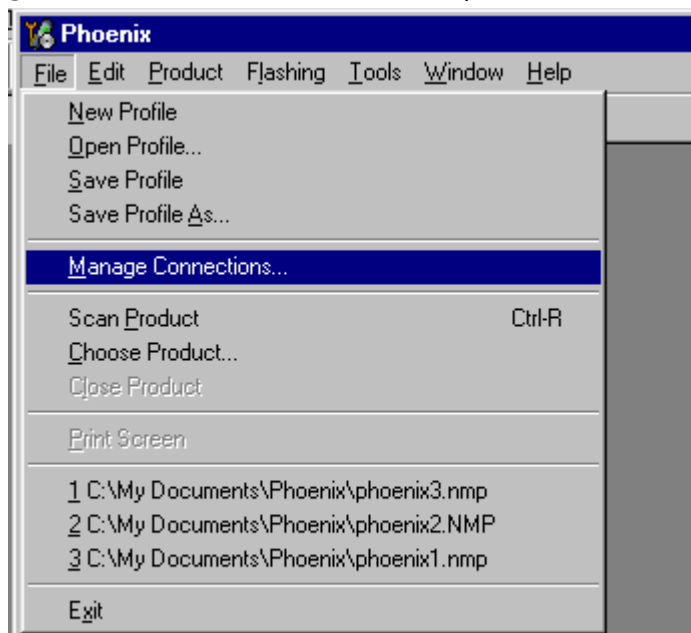
*Connection* is the type of cable used to attach the phone and the port on the computer where it is attached. Refer to *Chapter 7-Service Tools* for additional information.

The first time Phoenix is used, certain connection configurations must be made. Subsequent uses will rely on these selections and they will not need to be made again.

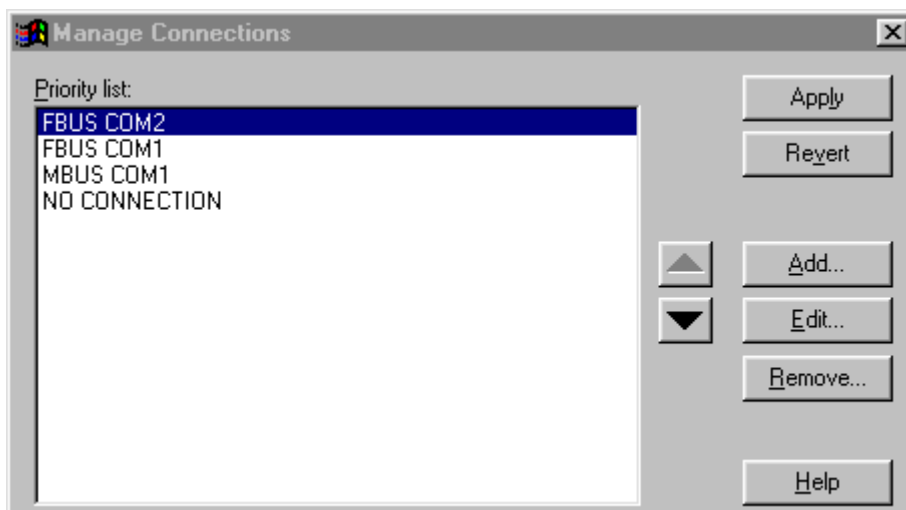
### Initial Session with Phoenix

It is necessary to create the connection the first time Phoenix is used. Follow these simple steps:

Select Manage Connections... from the "File" drop-down menu.

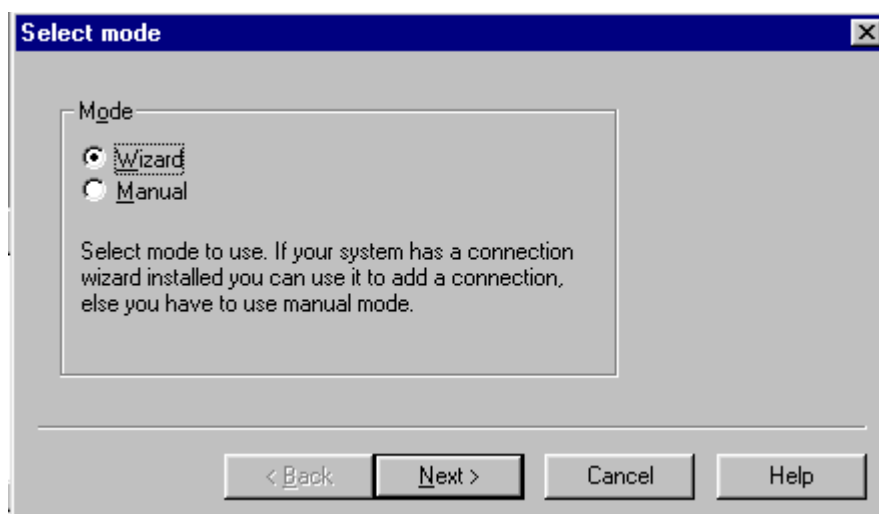


Next click the **A**dd... button to create a new connection.



When the *Select Mode* dialog box appears, you may then select either Wizard, which will auto-detect your connection configuration, or Manual, which allows you to manually select options to create the connection.





Once a connection is defined, make sure that the one to be used is moved to the top of the list (use the up down arrows on the *Manage Connections* dialog box. Then click on the **Apply** button. Close the window when finished.

You can now proceed with the normal initiation of a session by selecting a product or scanning for a product.

## Scanning for a Product

Many features of this program are product-specific. Therefore it is necessary to configure Phoenix for the product on which you will be working at the beginning of the session.

Scan Product – Choose Scan Product from the drop-down menu list and Phoenix will automatically scan for product and select the necessary configurations. The status bar at the bottom will indicate if the product was found and its type.

## Using Components

When working with Phoenix, tasks are generally managed by specific software components. From the menu, select the desired component or task to be performed.

“Opening a component” is defined as opening a tool window within Phoenix. When this window is opened, Phoenix also opens a toolbar for it and adds component-specific menu items in the Window menu.

## Using Profiles

Phoenix’s Profile feature allows product, connection and currently open components to be stored into permanent storage by creating a profile file with a name of your choice followed by an *.nmp* file extension for later retrieval.

Saved profiles makes it easy to configure Phoenix into a desired configuration with favorite windows already opened and ready to go.

Opening and saving profiles is done via menu commands found in the *File* drop-down menu: *Open Profile* and *Save Profile*.

Profiles are stored into a disk file with user-defined names. As a result, there can be multiple profiles for different repeated tasks or user preferences.

## Uninstalling Phoenix

As mentioned in the **Installing Phoenix** section, it may be necessary or desirable to remove Phoenix. Care must be taken to follow this procedure. Failure to remove the program properly will cause misconfiguration of the computer's registry.

### Uninstalling Phoenix version:

- Access the computer's "Control Panel" section, selectable from the **Start** button or the "My Computer" desktop icon
- Select the "Add/Remove Programs" icon
- Select the Phoenix version to be removed, and click the **Add/Remove** button
- Click on the **OK** button to begin the process of removal
- Follow the on-screen instructions

*Be sure to reboot the computer when finished.*